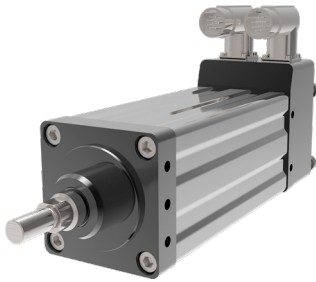


Curtiss-Wright offers a broad range of Exlar® products to fit almost any need. From a simple servo motor to a fully integrated drive / motor / actuator, chances are we have the solution to solve your most difficult manufacturing challenges. Our newest actuators offer even more force and functionality than before.

While this overview provides a brief summary of products available, you may want to request a copy of the catalog for complete descriptions, specifications, and drawings at [www.exlar.com](http://www.exlar.com).

## INTEGRATED MOTOR / ACTUATORS



### GTX Series Linear Actuators

Model	Frame Size mm (in)	Stroke mm (in)	Max Force N (lbf)	Max Speed mm/sec (in/sec)
GTX080	80 (3.15)	100 (4), 150 (6), 300 (12), 450 (18)	AC - 8,365 (1,881) DC - 7,101 (1,596)	AC - 1,270 (50) DC - 508 (20)
GTX100	100 (3.9)	150 (6), 300 (12)	AC - 15,392 (3,460)	AC - 953 (37.5)

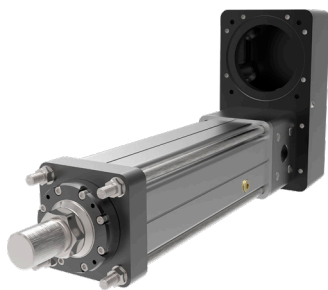
## FULLY INTEGRATED DRIVE / MOTOR / ACTUATORS



### TTX Series AC or DC Linear Actuators

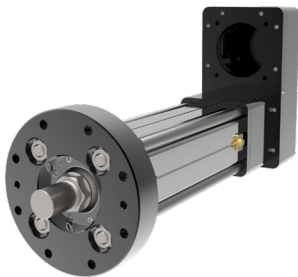
Model	Frame Size mm (in)	Stroke mm (in)	Max Force N (lbf)	Max Speed mm/sec (in/sec)
TTX080	80 (3.15)	100 (4), 150 (6), 300 (12), 450 (18)	AC - 5,900 (1,325) DC - 4,970 (1,115)	AC - 635 (25) DC - 508 (20)

## LINEAR ACTUATORS WITH EXTERNALLY MOUNTED MOTOR



### FTX Series Linear Actuators

Model	Frame Size mm (in)	Stroke mm (in)	Max Force kN (lbf)	Max Speed mm/sec (in/sec)
FTX095	95 (3.74)	150 (6), 300 (12), 600 (24), 900 (36)	22.2 (5,000)	1,500 (59.3)
FTX125	125 (5)		44 (10,000)	583 (23)
FTX160	160 (6.3)		89 (20,000)	1,000 (39)
FTX215	215 (8.5)	150 (6), 300 (12), 600 (24)	178 (40,000)	875 (34)



### FTP Series Linear Actuators

Model	Frame Size mm (in)	Stroke mm (in)	Max Force kN (lbf)	Max Speed mm/sec (in/sec)
FTP160	160 (6.3)	150 (6), 300 (12), 600 (24), 900 (36)	200 (45,000) 22.5 tf (pressing)	401 (15.8)
FTP215	215 (8.5)	150 (6), 300 (12), 600 (24)	355 (80,000) 40 tf (pressing)	351 (13.8)